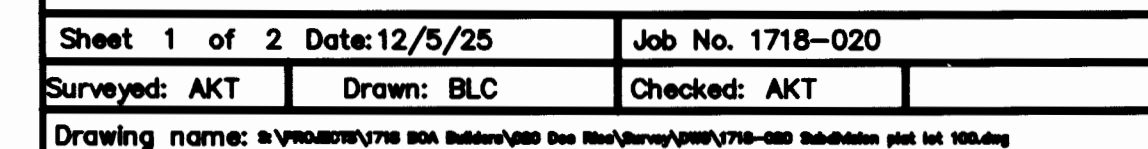


**CRAWFORD ROW TOWNHOMES AT DOS RIOS FILING 2**  
**A REPLAT OF LOT 100 OF CRAWFORD ROW TOWNHOMES AT DOS RIOS FILING 1,**  
**RECEPTION NUMBER 3089315**  
**Government Lot 1 of Section 22, Township 1 South, Range 1 West, Ute Meridian**  
**City of Grand Junction, Mesa County, Colorado**



The bearings hereon are grid bearings of the Mesa County Local Coordinate System, GVA, as defined at [http://emop.mesacounty.us/gps\\_survey/GVAZONE.htm](http://emop.mesacounty.us/gps_survey/GVAZONE.htm), determined by GPS observation of the north line of the Government Lot 1 of Section 22, T.1S., R.1W., Ute Meridian, the Northeast corner of said Section 22, being a 2.5" Brass cap on a pipe marked "MCSM 828-1" whence the North 1/4 Corner of said Section 22, being a 2.25" brass cap marked "MCSM 527", bears North 89°57'15" West, as shown hereon.



